

Laurel Ridge

THE ESTATES

SOPHISTICATION • PRIVACY • CONVENIENCE



Sadler Construction

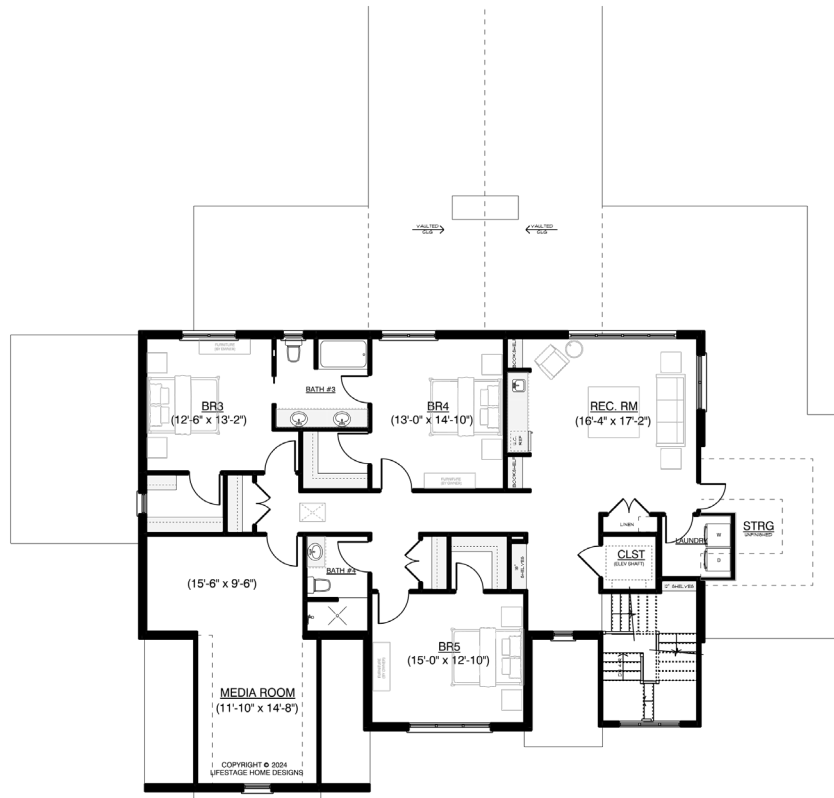
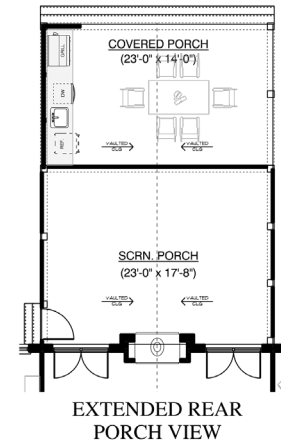
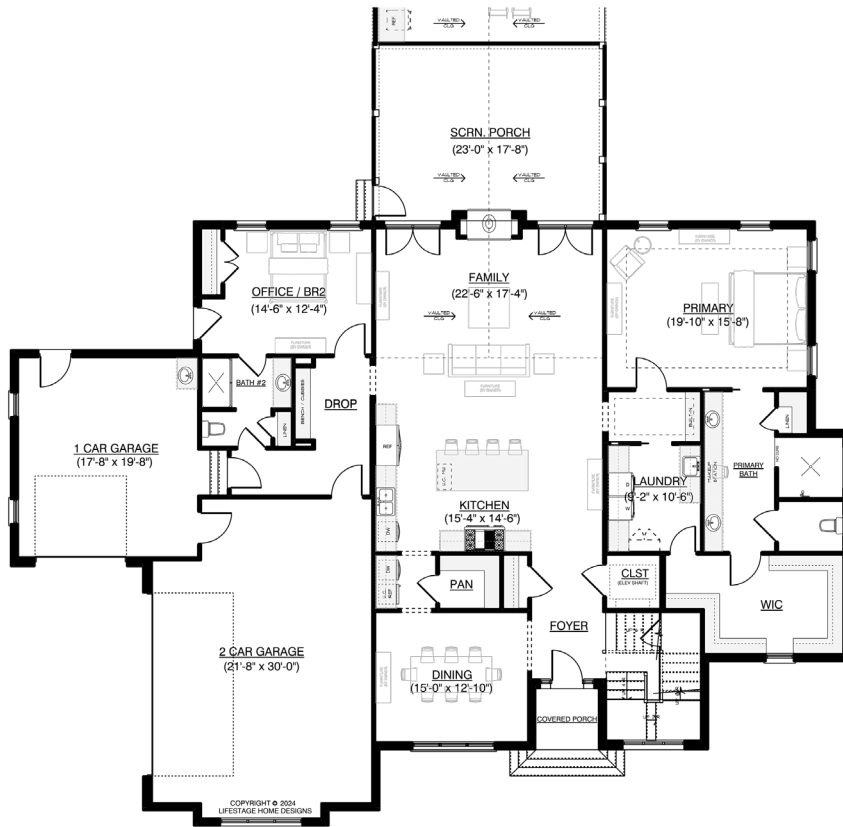
Homesite 7 // 67 Ridgeline Court • Pittsboro, NC

5 BDR // 4 BA // 4,689 SF // 3.1 Acres

First Floor Primary Suite with Spa Bath & Ensuite Laundry

Spacious Screened Porch with Outdoor Kitchen // 3 Car Garage

\$2,448,315



Sadler Construction

HOMESITE 7