

# Laurel Ridge

Pittsboro, NC | Priced: From \$1.5 Million +

## Custom Estate Residences

### HOMESITE 21

429 Brook Green Lane  
Pittsboro, NC 27312

5 Bed | 4 Bath | 1 Half Bath

4430 Square Feet

2 Car Garage

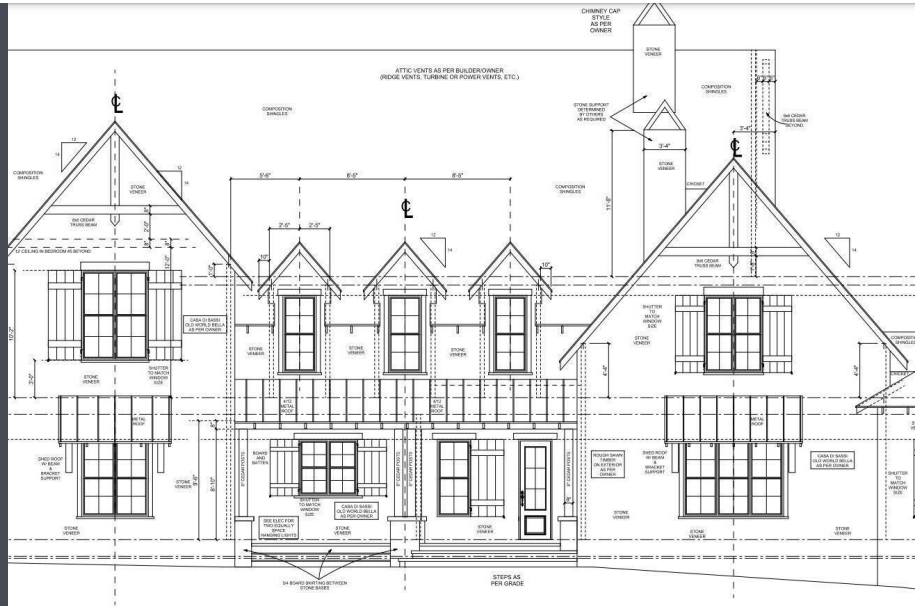
1st Floor Owner Suite

MLS: 10075379

Built by: Dunning Custom Homes

**\$2,077,000 / AVAILABLE**

Buyer's Agent: 2.5%



### HOME DESCRIPTION

Owner designed presale opportunity in picturesque Laurel Ridge finely crafted by award winning Dunning Custom Homes. Located just 5 minutes from Chapel Ridge Golf Club and 10 minutes from booming Chatham Park, you get the best of both worlds at Laurel Ridge: scenic living near the Haw River & Jordan Lake w retail & entertainment at Mosaic just minutes away. Large acreage w NO WELL or SEPTIC NEEDED!

### CONTACT COMMUNITY

Sales Associate: Kerrie Bornkessel  
(919) 926-5502 | laurelridge@fmbnewhomes.com  
[www.DiscoverLaurelRidge.com](http://www.DiscoverLaurelRidge.com)

Prices, promotions, specifications and community information are subject to change without notice. 04/2025

